



# OUT IN THE OPEN

OFFICIAL FESTIVAL GUIDE  
6 - 8 NOVEMBER 2015



# Wonderland

# WELCOME TO GREATER SHEPPARTON



On behalf of Greater Shepparton City Council, I would like to welcome you to our city for the OUTintheOPEN Carnival Day. Our municipality is diverse and tolerant and we are proud to be a host city and supporter of this event.

Shepparton has a long history of hosting events and we are pleased to support experiences that celebrate community diversity.

It is important to address some of the inequalities faced by the local GLBTIQ community and to work on building a more inclusive community in our region. Council recently voted to support marriage equality and in turn advocate for the rights of our GLBTIQ community.

OUTintheOPEN provides an opportunity for people to come together and celebrate in an environment in which they feel comfortable and accepted.

We hope you enjoy your stay in Shepparton and take the opportunity to visit some of our other tourism attractions while you are here.

*Mayor  
Cr Dennis Patterson  
Greater Shepparton City Council*



Check out Shepparton's Mooving Art: Monash Park, cnr. High & Fryers Sts (Photo: Liz Arcus)



Visit Mooroopna's colourful water tower: McLennan Street (Photo: Daniel Gommers)

## FESTIVAL OVERVIEW

OUTintheOPEN is Greater Shepparton's newest festival celebrating community diversity. 2012 was our inaugural year. OUTintheOPEN was developed to address some of the inequalities faced by the local gay, lesbian, bisexual, transgender, intersex, queer (GLBTIQ) & allied communities and to build a more inclusive community in Greater Shepparton. We are now in our 4th year. OUTintheOPEN Festival is a project auspiced by Kildonan UnitingCare (KUC) and is proudly supported by many other organisations and community groups, including:

- Primary Care Connect (PCC)
- Goulburn Valley Health
- The Bridge Youth Service
- Goulburn Valley Pride Inc.
- PFLAG (Parents, Family members & Friends of Lesbian & Gay people) Shepparton
- Diversity Group (same-sex attracted, sex & gender diverse young person's social-support group)
- headspace Shepparton
- Centre for Excellence in Rural Sexual Health (CERSH)
- Relationships Australia Victoria
- WayOut - Cobaw Community Health
- JOY 94.9 (official media partner)
- Greater Shepparton City Council
- Goulburn North East Women's Health
- Goulburn Valley Hotel
- The Aussie Hotel
- Victoria Police
- Berry Street
- Valley Sport
- Princess Park Clinic
- Word and Mouth
- Shepparton Medical Centre

The festival will consist of a health/well-being forum at Goulburn Valley Hotel function rooms and a Carnival Day on the first weekend in November in the Queens Gardens. Other events will compliment the Festival in this it's fourth year.

## FESTIVAL BACKGROUND

Greater Shepparton has a diverse community comprising of a significant Gay, Lesbian, Bisexual, Transgender, Intersex and Queer (GLBTIQ) community, a large portion of our community were born overseas (12%) and 4% of our community are Aboriginal or Torres Straight Island people. However, the celebration of the diversity in Greater Shepparton remains minimal. Related to this is a stigma around the community diversity in Shepparton, in particular our GLBTIQ communities.

There are a small number of active, established groups that celebrate GLBTIQ culture, such as Parents, Families and Friends of Lesbians and Gays (PFLAG) Shepparton, Diversity Group and Goulburn Valley Pride, which all operate within our community.

In spite of this, the Private Lives survey of Australian GLBTIQ people found that rural males and females aged 20-29, who identify as same sex attracted, feel less connected to their GLBTIQ community than their metropolitan counterparts (Pitts, Smith, Michelle, & Patel, 2007).

GLBTIQ people in rural areas have different needs to those in metropolitan areas. They face discrimination from homophobic attitudes, isolation, limited clinical health services and limited support systems. The Private Lives survey also found that some rural people identifying as GLBTIQ are targets of violent attacks.

It was identified that there were little opportunities in Greater Shepparton to celebrate this diversity as well as initiatives aimed at breaking down the stigma around GLBTIQ communities. From this, the idea of an inclusive festival came to life, with KUC becoming the lead organisation for the OUTintheOPEN Festival.

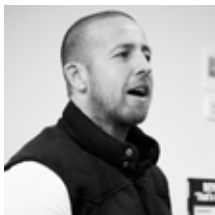
Community festivals can increase feelings of belonging to a community, create connections, bring diverse people and organisations together, both through the festival planning and festival events, and build social inclusion, which has been linked with improved mental health and wellbeing (Barraket & Kaiser, 2007). Social inclusion can be defined as "where all people feel valued, their differences are respected and their basic needs are met so they can live in dignity".

# WORKING WITH SSASGDYP & THEIR COMMUNITIES (FORUM)

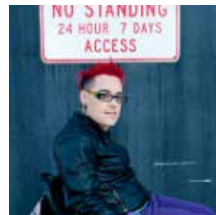
Calling all health professionals, community organisations, youth workers, school teachers, welfare workers, LGBTI community members and their allies. Join us for this all-in-one Forum (Working with same sex attracted, sex and gender diverse young people & their communities) – guest speakers/topics to include:



Rowena Allen  
*Gender & Sexuality Commissioner  
(keynote speaker)*



Daniel Witthaus  
*NICHE (National Institute Challenging  
Homophobia Education),*



Jax-Jacki Brown  
*Disability, Sexuality*



Sandy Ashton  
*Switchboard Victoria's  
Out and About Coordinator*



Damien Stevens  
*Diversity Project*



Suzanne Wallis  
*GV Health - Sexual Health*

## GIVE ME THE DETAILS!!

**Venue: GV Hotel (Classic Room),  
223 High Street, Shepparton**  
**Registrations: 9.00am**  
**Forum: 9.30am – 3.30pm**  
**(NICHE regional launch to follow 3.30pm – 4.00pm)**  
**Visit [www.outintheopen.org.au](http://www.outintheopen.org.au) for more info and to register**



Young People  
Youth Panel  
*Facilitated by Zoe Birkinshaw*

# OUR SUPPORTERS



**gv.pride**

*“THE place to meet, socialise and spend time with those you KNOW exist, but you cannot seem to find...”*

**GREATER SHEPPARTON'S GLBTIQA SOCIAL GROUP**

visit us @ [www.gvpride.org](http://www.gvpride.org)

or  /gvprideshepparton & check out our weekly social event calendar



**DIVERSITY**

"Diversity" is Greater Shepparton's social-support group for same sex attracted, sex & gender diverse young people 10-25yrs (& their friends)

Fortnightly meetings include guest speakers, food & fun activities!



 Find us on: **facebook**®  
[www.facebook.com/diversitygroup](http://www.facebook.com/diversitygroup)

P. 03 5831 6157 F. 03 5822 1778  
SMS / M. 0437 134 625  
E. [dstevens@kildonan.org.au](mailto:dstevens@kildonan.org.au)



parents, families & friends of LGBTI people who meet once a month & offer support & friendship to families, particularly parents, & also to members of the LGBTI community who may need support in coming out to their families and friends

**Venue:** Kildonan UnitingCare, 136 Maude Street, Shepparton  
**Phone:** Glenys on 0409 626 647 **Email:** [info@pflagsshepparton.org.au](mailto:info@pflagsshepparton.org.au)  
**Mail:** C/- PO Box 1697, Shepparton, 3632

[www.pflagsshepparton.org.au](http://www.pflagsshepparton.org.au)  /pflaggreaterShepparton



The "Diversity Project" aims to create a safer, more inclusive, and healthier community for young people in the City of Greater Shepparton (& beyond) who are same sex attracted, sex & gender diverse.

 /DiversityProjectGreaterShepparton

P. 03 5831 6157 F. 03 5822 1778  
SMS / M. 0437 134 625  
E. [dstevens@kildonan.org.au](mailto:dstevens@kildonan.org.au)





Friday, November 6 at 7:00pm - 11:00pm

PRESENTS AS PART OF **OUTintheOPEN** Festival

# HAPPY IDIOT COMEDY NIGHT

## TICKETS ON SALE NOW!

Join us for food, wine,  
beer, cider, live entertainment  
& music, comedy show by  
NATH VALVO (9 - 10pm)  
and much more.

### ONLINE TICKET SALES

<http://www.trybooking.com/JJLF>

#### TICKETS

THEATRE-STYLE  
SEATS, **\$20pp**

TABLES OF 10, **\$20pp**  
(we will fit you onto a table)

STANDING ONLY, **\$15pp**

#### VENUE

The Vault - rear of  
168 Maude Street,  
Shepparton, Vic, 3630



GV Pride members save **\$5 per ticket**

No need to eat beforehand - from 7.00pm we'll have charcuterie boards & cheese boards (both \$18); arancini, meatballs, chicken skewers, buffalo wings, rice paper rolls (all \$10); with smashed pav (\$10) and mixed slices (\$3.50) for dessert available ... YUM!



# CHECK OUT THE ART SHOW ON CARNIVAL DAY!



*Cill's*  
Creative Cakes



Custom Made Cakes For All Occasions  
(03) 5822 1673  
[www.cillscreativecakes.com.au](http://www.cillscreativecakes.com.au)



# WONDERLAND

## CARNIVAL DAY

WITH YOUR EMCEE...

*Rhubarb  
Rouge*

**FREE EVENT**

**SATURDAY 7<sup>TH</sup> NOVEMBER**

**QUEEN'S GARDENS**

**CNR WYNDHAM AND NIXON STREETS  
SHEPPARTON, VICTORIA**

**10.30AM - 4.00PM**

LIVE LOCAL PERFORMERS INCLUDING  
WHITAKER  
MELBOURNE GAY AND LESBIAN CHORUS  
NICOLETTE FORTE  
LOLA'S POLE SCHOOL & MORE

FAMILY FUN FOR EVERYONE  
50+ STALLS & MERCHANDISE TO BUY  
LIVE JOY RADIO BROADCAST  
FOOD & DRINKS FOR PURCHASE  
FREE JUMPING CASTLE & PETTING ZOO  
ART SHOW / AUCTION & MORE

BYO PICNIC BLANKET / CHAIRS

**OUTintheOPEN FESTIVAL 6<sup>TH</sup> - 8<sup>TH</sup> NOVEMBER 2015**

More info at [www.outintheopen.org.au](http://www.outintheopen.org.au)



Find us on  
**Facebook**

 UnitingCare  
Kildonan

 The Bridge  
Social Services

 OUTintheOPEN

 GREATER  
SHEPPARTON

 g.v.pride

 DIVERSITY

 diversity  
united



 Travellers

 JOY 94.9  
Official Media Partner



 Relationship Australia  
official

 hoodspots  
Blessington

 Riverlinks

THIS IS A DRUG & ALCOHOL FREE EVENT



# SOME INFO ABOUT CARNIVAL DAY!

OUTintheOPEN is Greater Shepparton's newest Festival celebrating community diversity. Carnival Day is our BIG event! Come and play with us in the park at Queen's Gardens on Saturday 7 November from 10.30am - 4.00pm (cnr. Wyndham & Nixon Streets, Shepparton). Wander through the stalls and markets; savour the smells and tastes of fresh local produce. There's music, entertainment, food & info galore. Bring your friends, family and loved ones and don't forget your picnic blanket! Also, please keep in mind as you plan for the day, that Carnival Day has a no glass policy.

Check out the Art Exhibit while the kids bounce on the jumping castle or play in the petting zoo! FREE family fun for everyone!!

Performers include:

- Rhubarb Rouge – Emcee
- Whitaker  
(*Ryan Meeking, Simon Rabl, Brett Scapin*)
- The Melbourne Gay and Lesbian Chorus
- Nicolette Forte
- Lola's Pole School
- Jostan Murray
- Theory One
- The 3%ers
- Short Term
- More...

Stalls to include:

- Shepparton Lions Club BBQ
- Café Buzz Box Coffee
- La Crepe Downunder
- Top Notch Poffertjes
- Rick the Hotdog Man
- Karen's Baked Potatoes
- Simply Creative Vietnamese
- Water trailer
- KE Emporium
- Victoria Police

- OUTintheOPEN Festival
- GV Library
- Diversity Group / Kildonan UnitingCare
- headspace Shepparton
- The Bridge Youth Service
- Dreamworks Jumping Castles
- GV Pride / PFLAG Shepparton
- Roger's Clutter (2nd hand books)
- GV Health - Act Belong Commit
- Sunglasses & Hats
- Beads, Jewellery, Suncatchers 'n' More
- Faydra Blends Handmade Candles & Soaps
- JOY 94.9
- Living Positive Victoria
- St. John's Ambulance
- WirraMirra Too Petting Zoo
- Rainbow Store
- Victorian AIDS Council
- Goulburn Murray Greens / Queer Greens Victoria
- Australian Equality Party
- Relationships Australia Victoria
- Tye Dyed Clothing & Airbrush face painting + temp tattoo
- GV Amnesty International
- LGBTI Affairs policy committee of Victorian Labor
- Carol's Crafty Bits
- Kaszazz
- Posh Pets
- Australian Pride Network
- Motafrenz Car Club Inc.
- Gay and Lesbian Tourism Australia
- MI Fellowship
- Angela's Balinese Treasures
- Greater Shepparton City Council
- Flourish Landscapes
- Joy Nappy

PRETTY PEEPERS PRESENTS as part of OUT IN THE OPEN FESTIVAL

# THE GLITTA SUPERNOVA EXPERIENCE

Let's get METAphysical

7th November. 7:30pm

ADULT \$29

CONCESSION \$24



"Not lady-gaga-bizarre, real bizarre, the kind of s\*\*t that takes true balls. Burlesque with acne, apocalyptic sexual bravery"  
- Amanda Palmer

"Upsetting the conventions of burlesque, challenging expectations while dazzling with sophisticated performances"  
- ARTSHUB

"There's an important message in this full frontal spectacle. Be yourself, dont follow the crowd & be true to you"  
- The Advertiser

Nominated "Best Cabaret" - FRINGEWORLD Perth 2015



TICKETS: [www.trybooking.com/JJGP](http://www.trybooking.com/JJGP)

THE VAULT - 55 Fryers St, Shepparton  
(laneway off Maude St)

[facebook.com/prettypescabaret](https://facebook.com/prettypescabaret)  
[instagram.com/prettypescabaret](https://instagram.com/prettypescabaret)  
[twitter.com/peeperscabaret](https://twitter.com/peeperscabaret)

# OUR SUPPORTERS

**STANDING UP FOR  
LGBTIQ VICTORIANS**



living positive victoria

# STRONGER TOGETHER

*Become a Member of  
Living Positive Victoria*

For membership details contact 03 9863 8733 or visit our website [livingpositivevictoria.org.au](http://livingpositivevictoria.org.au)



**The Bridge  
Youth Service**





# GLAMOUR PARTY

MUSIC • DRAG • DANCE • PARTY

Hosted by  
*Rhubarb Rouge*



DJ ZITO  
ALL NIGHT



Performances by:  
*Charity Stouts*



*Esther Rix*



*Male Strippers*



Red Carpet & Photos



*Honey Nichols*



*Tequila Slammer*

&

MORE!

7th NOVEMBER  
SATURDAY From 9:00 PM  
@ Aussie Hotel

Tickets \$15 available at | limited tickets at the door  
<http://glamourparty.eventbee.com>

presented as part of:  **OUT and OPEN**

# OUR SUPPORTERS

**JENNIFER BROADBENT**  
MARRIAGE CELEBRANT  
YOUR DAY, YOUR WAY

[WWW.CEREMONIESOFCHOICE.COM.AU](http://WWW.CEREMONIESOFCHOICE.COM.AU)



**Keeping mentally healthy is as important as staying physically healthy, and it's as easy as A-B-C.**

To find out more visit [www.actbelongcommit.org.au](http://www.actbelongcommit.org.au)



## Welcome Drinks/Dinner

5pm - 7pm | Sat 7 Nov

### Thai Orchard

We have a booking for 45 people and this event WILL sell out ... seating is limited - so you MUST reserve your seat by emailing [rsvp@outintheopen.org.au](mailto:rsvp@outintheopen.org.au).  
Venue info & menu @ <http://thaiorchidshppardton.com.au/>



## Morning Meditation

9.30am - 10.30am | Sun 8 Nov

Harmony Place, Edward St  
Meditation is exercise and training for our minds!  
Spaces are limited - so you MUST reserve your spot by emailing [rsvp@outintheopen.org.au](mailto:rsvp@outintheopen.org.au).  
Web: <http://www.thingsofspirit.com/>



## Sunday Sesh @ Peppermill

2pm - 5pm | Sun 8 Nov

### Peppermill, GV Hwy

Join OUTintheOPEN Festival friends and supporters for some tunes and a Sunday sesh as we wind down the Festival - Jostan Murray will keep you entertained for the arvo.  
Web: <http://peppermillinn.com.au/>





Festival fans are invited to join us for the official **OUTintheOPEN Festival Brunch**, taking place at **Lemon Tree Cafe** on **Fryers Street, Shepparton**.

The Festival Fundraising Brunch provides a wonderful opportunity to celebrate the Festival together with friends over a cup of great coffee and a spread of goodies fresh out of the Lemon Tree kitchen. Ticket price includes one **BIG** breakfast item from the menu, and one **BIG** mug of coffee or tea.

Seating is limited & tickets **MUST** be pre-purchased, so please book now...or miss out!

For more info please call **Jim & Mary** on **03 5821 7190** or visit <http://www.outintheopen.org.au> for tickets. **ALL tickets MUST** be pre-purchased **ONLINE**.

cost: \$25 per person  
sunday 8 november 2015  
11am - 2pm  
lemon tree café  
98 fryers street, shepparton

{the annual}  
**BIG**  
lemon tree  
brunch

*Hosted by Australian GLBTIQ Multicultural Council Inc. (AGMC) and Parents and Friends of Lesbian And Gay people (PFLAG) Greater Shepparton as part of the OUTintheOPEN Festival*



[www.outintheopen.org.au](http://www.outintheopen.org.au)



[www.pflagsshepparton.org.au](http://www.pflagsshepparton.org.au)



[www.agmc.org.au](http://www.agmc.org.au)

*Lemon Tree Cafe*  
*Lunch & Coffee Sells*



**PHONE: 1300 30 11 19**

KALINSKI TRAVEL CO

P: 1300 30 11 19

E: [info@kalinskitravelco.com.au](mailto:info@kalinskitravelco.com.au)

W: [www.kalinskitravelco.com.au](http://www.kalinskitravelco.com.au)



# OUTintheOPEN CARNIVAL DAY

Kalinski Travel Co, Melbourne's glamorous GLBTQI Touring Company are offering return Coach Travel between Melbourne and Shepparton for OUTintheOPEN 2015.

OUTintheOPEN is held in Shepparton to bring people, projects and services all together, Celebrating Community Diversity.

Providing a safe, family friendly environment you are all invited to join.

In 2015, Kalinski Travel Co will connect our community in Melbourne with Shepparton to Celebrate Diversity, Qualities and You!

## SATURDAY 7 NOVEMBER 2015

Depart Melbourne: 07:30 am / Arrive Shepparton: 10:30 am

- Experience OUTintheOPEN festival
- Make New Friends
- Country Culture
- Live Performances
- Food, Info & Market
- Family Fun for Everyone

Depart Shepparton: 17:30 pm / Arrive Melbourne: 20:30 pm

**CHILDREN  
TRAVEL  
FREE**

**ONLY  
\$70  
PER PERSON  
INCLUDING**

- return luxury coach travel
- on-board restroom
- large reclining seats
- foot & arm rests
- on-board LIVE entertainment

## TICKETS

Purchase via our "check availability" function on:

[www.kalinskitravelco.com.au](http://www.kalinskitravelco.com.au)  
or by calling 1300 30 11 19

Film plus Q&A presented by OUTintheOPEN

Village Cinemas Shepparton, Sun Nov 8, 5pm

Tickets [www.tugg.com.au/AllAboutE](http://www.tugg.com.au/AllAboutE)



MANDAHLA ROSE BRETT ROGERS JULIA BILLINGTON

# ALL ABOUT *e*

A FILM BY LOUISE WADLEY

“Laughs, suspense, and a deliriously good sex scene”  
*San Francisco Chronicle*



SCREEN NSW IN ASSOCIATION WITH GIRLS' OWN PICTURES PRESENTS A FILM BY LOUISE WADLEY STARRING MANDAHLA ROSE JULIA BILLINGTON BRETT ROGERS SIMON GULTON WITH KIM ANTONIUS HAYES LEX MATHIAS  
EXECUTIVE PRODUCERS LEE NARISE JILLY MCGILVERY SHAUN MILLER PRODUCED BY JUSTINE KIRSHAN EDITOR ROWENA CRONE COMPOSER BASIL HODGINS WITH MUSIC BY JOSEPH DANIELS  
CASTING ANDREA OLIVA COSTUME DESIGNER WARREN LYNCH PRODUCED BY JAY RUTOVITZ WRITTEN AND DIRECTED BY LOUISE WADLEY

[facebook.com/AllAboutE](https://www.facebook.com/AllAboutE) [girlsown.com/AllAboutE](http://girlsown.com/AllAboutE)

