



OUT IN THE **OPEN**

**Official Gig Guide
OUTintheOPEN Festival
15-17 November 2013**

OUR SUPPORTERS



gv.pride

THE place to meet, socialise and spend time with those you KNOW exist, but you cannot seem to find...

GREATER SHEPPARTON'S GLBTIQA SOCIAL GROUP

visit us @ www.gvpride.org

or  /gvpride & check out our weekly social event calendar

FUN FRIENDSHIP FAMILY COMMUNITY



Diversity

"Diversity" is Greater Shepparton's social-support group for same sex attracted & gender diverse young people 10-25yrs (& their friends)

Fortnightly meetings include guest speakers, food & fun activities!



Find us on: **facebook**®
www.facebook.com/diversitygroup

P. 03 5831 6157 F. 03 5822 1778
SMS / M. 0437 134 625
E. diversity@ucce.org.au

 **UnitingCare**
Cutting Edge



parents, families & friends of LGBTI people who meet once a month & offer support & friendship to families, particularly parents, & also to members of the LGBTI community who may need support in coming out to their families and friends

Venue: UnitingCare Cutting Edge, 136 Maude Street, Shepparton
Phone: Glenys on 0409 626 647 Email: pflagsshepparton@ucce.org.au
Mail: C/- PO Box 1697, Shepparton, 3632

www.go.to/pflagsshepparton  /pflagsshepparton



diversity project

The "Diversity Project" aims to create a safer, more inclusive, and healthier community for young people in the City of Greater Shepparton (& beyond) who are same-sex attracted or gender diverse

 /diversityprojectsshepparton

P. 03 5831 6157 F. 03 5822 1778
SMS / M. 0437 134 625
E. diversity@ucce.org.au

 **UnitingCare**
Cutting Edge

Join us at the Diversity Project office (136 Maude Street, Shepparton) for a rainbow-flag raising ceremony & open day between 10.00am -11.00am on Sunday 17 November.

FESTIVAL OVERVIEW

OUTintheOPEN is Greater Shepparton's newest festival celebrating community diversity. 2012 was our inaugural year.

OUTintheOPEN was developed to address some of the inequalities faced by the local gay, lesbian, bisexual, transgender, intersex, queer (GLBTIQ) & allied communities and to build a more inclusive community in Greater Shepparton.

OUTintheOPEN is a project led by UnitingCare Cutting Edge (UCCE) and The Bridge Youth Service and is proudly supported by many other organisations and community groups, including:

- Primary Care Connect (PCC)
- Goulburn Valley Health
- Goulburn Valley Pride Inc.
- PFLAG (Parents, Family members & Friends of Lesbian & Gay people)
- Diversity Group (same-sex attracted, intersex, trans* & gender diverse young person's social-support group)
- headspace Shepparton
- Centre for Excellence in Rural Sexual Health (CERSH)
- Relationships Australia Victoria
- WayOut - Cobaw Community Health
- JOY 94.9 (official media partner)
- Greater Shepparton City Council
- Goulburn North East Women's Health
- Goulburn Valley Hotel
- Victoria Police
- Berry Street
- Valley Sport
- Princess Park Clinic
- Word and Mouth

The festival will consist of a health/well-being forum at Goulburn Valley Hotel function rooms and a Carnival day on the third weekend in November in Queens Gardens.

Other events will compliment the Festival in this it's second year.

FESTIVAL BACKGROUND

Greater Shepparton has a diverse community comprising of a significant Gay, Lesbian, Bisexual, Transgender, Intersex and Queer (GLBTIQ) community, a large portion of our community were born overseas (12%) and 4% of our community are Aboriginal or Torres Straight Island people. However, the celebration of the diversity in Greater Shepparton remains minimal. Related to this is a stigma around the community diversity in Shepparton, in particular our GLBTIQ communities.

There are a small number of active, established groups that celebrate GLBTIQ culture, such as Parents, Families and Friends of Lesbians and Gays (PFLAG), Diversity Group and Goulburn Valley Pride, which all operate within our community. In spite of this, the Private Lives survey of Australian GLBTIQ people found that rural males and females aged 20-29, who identify as same sex attracted, feel less connected to their GLBTIQ community than their metropolitan counterparts (Pitts, Smith, Michelle, & Patel, 2007).

GLBTIQ people in rural areas have different needs to those in metropolitan areas. They face discrimination from homophobic attitudes, isolation, limited clinical health services and limited support systems. The Private Lives survey also found that some rural people identifying as GLBTIQ are targets of violent attacks.

It was identified that there were little opportunities in Greater Shepparton to celebrate this diversity as well as initiatives aimed at breaking down the stigma around GLBTIQ communities. From this, the idea of an inclusive festival came to life, with UCCE & The Bridge Youth Service becoming the lead organisations for the OUTintheOPEN Festival.

Community festivals can increase feelings of belonging to a community, create connections, bring diverse people and organisations together, both through the festival planning and festival events, and build social inclusion, which has been linked with improved mental health and wellbeing (Barraket & Kaiser, 2007). Social inclusion can be defined as "where all people feel valued, their differences are respected and their basic needs are met so they can live in dignity".)

YOUTH HEALTH FORUM

**Outside the Square:
Including SSAITGD young people**

Friday 15 November 2013

Venue: GV Hotel Function Rooms

Time: 9.00am - 4.30pm

“Outside the Square: Including SSAITGD young people” is being hosted by UnitingCare Cutting Edge’s Diversity Project as part of the OUTintheOPEN Festival.

A forum to bring together everyone who connects with young people; service providers, teachers, welfare workers, healthcare professionals, admin. staff, retail & hospitality team members, parents, bus drivers, receptionists, bank tellers, YOU!

The forum will provide learning & professional development opportunities with a particular focus on “inclusive practice”; how best to cater to the needs of those who are SSAITGD (same sex attracted, intersex, trans* and/or gender diverse).

SSAITGD young people in rural areas have different needs to those in metropolitan areas facing higher levels of discrimination from homophobic attitudes, isolation, limited clinical health services and limited support systems. SSAITGD young people live, work and play in all parts of our community and can sometimes remain ‘invisible’ if the services/ places they seek support/hang out are not committed to “inclusive practice”. SSAITGD young people may not identify themselves as such - or use a label at all - so ensuring we’re providing “inclusive” spaces where everyone feels welcome is the key. “But how do I do that?”

Labels (and all letters of the alphabet) aside, all young people deserve (and have the right) to be treated fairly, equally - and live ‘label-free’, if they so choose. We don’t need to put people in a ‘straight’ or ‘SSAITGD’ checkbox to engage with them, but it certainly helps if we’re always thinking outside the square, “What can I do differently each day to ensure ALL young people feel welcome, valued & respected?”

Researchers, workers and young people involved in the youth sector will present information and inclusive practice strategies (for people living/working in country Victoria) in areas including mental health and wellbeing, sexual health, educational.

Keynote Speakers/Presenters/Sessions

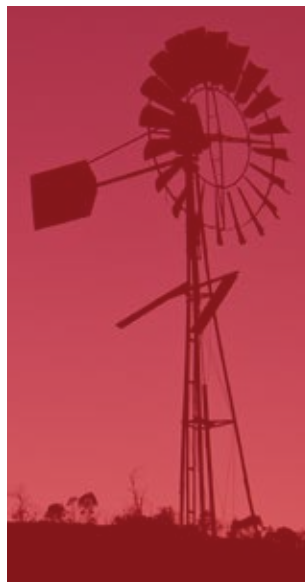
A full list of Forum keynote speakers, presenters & sessions can be found at:

www.outintheopen.org.au - click on the ‘Events’ tab, then ‘Fri 15 Nov | Forum’.

Information stalls & resources will be on display and available throughout the day.

Trans* people include (but are not limited to) those who describe themselves as transgender, transsexual, FTM (female to male), MTF (male to female), genderqueer, transman, transwoman, boi, crossdresser, androgynous, third gendered, two spirited, Sistagirl / Brotherboy.

All Forum attendees will receive a showbag containing resources, freebies & more.



OUR SUPPORTERS



Childhood can be a difficult time for young people who have experienced trauma, abuse, neglect or grief during their early life.

Berry Street is looking for people like you who can provide emergency, respite, short or long term care for vulnerable children and young people.

If you have room in your heart and home for a child or young person, then we want to speak with you.

For more information contact: **1800 U FOSTER** (1800 8 367837)

www.berrystreet.org.au

Berry Street believes all children should have a good childhood



We understand you're busy

And that's why we have changed the way we do things at **Princess Park Clinic**

From **30th September** we have **extended our hours**

Monday to Thursday 8am - 8pm

Friday 8am - 6pm

Saturday 9am - 12noon

Online Services

Via our Website www.princessparkclinic.com.au

Make Appointment

Order Repeat Scripts

Get Test Results

Repeat Referrals



www.princessparkclinic.com.au



172 Welsford St, Shepparton



(03) 5821 9655



Keep up to date on
[Facebook.com/
princessparkclinic](https://www.facebook.com/princessparkclinic)

BREAKFAST BITES

CERSH in collaboration with Goulburn Valley Medicare Local (GVML) and UnitingCare Cutting Edge (UCCE) invite GP's and Practice Nurses to:

Breakfast Bites (breakfast supplied)

Friday morning 15 November 2013

Venue: Friar's Cafe, 127 Fryers Street Shepparton

Time: 7.30am (sharp) - 8.30am

RACGP QI & CPD Activity Number 771920
4 Category 2 points have been applied for with the RACGP QI & CPD Program for the 2011-2013 triennium.

Guest Speaker: Dr Alan Wallace (BSc, MBBS, FRACGP) is a local GP with interests in General Medicine, Sports Medicine, Men's Health and Mental Health. He will discuss his experience of working within multi-disciplinary health services and explore their response to providing holistic care for intersex, sexuality and gender diverse people.

As a special addition to the session, there will be a young Transgender (Female-Male) person attend and speak of his experiences of the medical system during his transition. He will also discuss issues related to his integration within the general community and how this has impacted on his life, with an emphasis on living in a rural setting.

For 'Learning Objectives', more info or to contact us to reserve your place visit www.outintheopen.org.au



DINNER & A MOVIE

Official OUTintheOPEN Festival Welcome Dinner + "F2M: The Boy Within" Doco

Friday Nov 15th, 2013

Venue: GV Hotel Cabaret Room

\$29PP inc. two course meal + film

Join us for welcome drinks and live music from 6pm. Tickets on sale NOW @ www.outintheopen.org.au

The book "f2m: the boy within" provokes discussion about gender, creative collaboration and the value of fiction in allowing 'distanced' discussion of personal issues like family reactions. A 'coming of age' novel, with punk music, "f2m: the boy within" is the first young adult novel on transitioning gender co-written by Ryan Kennedy & Hazel Edwards.

Central character Skye, who becomes Finn, is approaching driver's licence age and photo identity requirements. Short-listed by the internationally prestigious White Ravens best YA fiction 2011, the book was also thrown in the bin by a teacher in front of students as 'Rubbish!' Thus provoking the documentary.

This 25 minute Kailash Studio documentary attempts to answer, via interviewing the co-authors, Ryan Kennedy and Hazel Edwards, the creativity of coping successfully with diversity. Especially when others may fear change or diversity. Family friends across the Tasman, Hazel and Ryan co-wrote on Skype and email. His first book, her 200th. Ryan Kennedy is an F2M and Hazel Edwards has an OAM (for literature) and a cake-eating hippo on her roof!

Only want to see the film? \$10pp for film screening only - arrive 8.25pm.



OUR SUPPORTERS

Lemon Tree Cafe

Leyanne & Cameron Stride

5822 2300

Open 7 Days
Breakfast and Lunch



Join us for brunch!

Between 10.00 - 10.30am on Saturday
morning 16 November

OUTintheOPEN Festival's preferred
venue for such tasty occasions!

Say "thanks" to Lemon Tree,
proud sponsors!



*Pap tests.
A little awkward for a
lot of peace of mind.*



For more information phone
13 11 20 or visit papscreen.org.au



WayOut



WayOut is proud to sponsor the OUTintheOPEN Festival 2013

WayOut is a suicide prevention program supporting Same Sex Attracted, Intersex and Gender Diverse Young People and their advocates throughout rural Victoria. WayOut is part of the HEY Project.

www.wayout.org.au

facebook.com/WayOutVictoria

Fruitworks

RETAIL & WHOLESALE

CRN. CORIO & STEWART STREET
SHEPPARTON

Fresh Produce Professionals

Mobile: Sam - 0417 366355

Phone - 03 5821 5688

Fax - 03 5831 1730



Grab your FREE piece of fresh
fruit from the OUTintheOPEN
Festival information tent on
Carnival Day at Queen's Gardens
on Saturday 16 November!
Don't miss out!

OUR SUPPORTERS

MS 24 Hour MEGA SWIM
SHEPPARTON 22-23 MARCH 2014

AQUAMOVES LAKESIDE SHEPPARTON Fundraise for people living with MS. Register as a team or individual to swim in relay for 24 hours. All ages and abilities. Swim for 10 minutes, 2 hours or all night!

AQUAMOVES **SHEPPARTON** **FUNKY TRUNKS** **FUNKITA** **SCODY**

REGISTER NOW AT megaswim.com

JENNIFER BROADBENT
MARRIAGE CELEBRANT
YOUR DAY, YOUR WAY

act belong commit **GET INVOLVED!** **act belong commit**

actbelongcommit.org.au

GEORGY AWARDS
40TH ANNIVERSARY | 2013

Eastbank Centre
Welsford Street, Shepparton
7.30pm
Saturday 16 November 2013

BOOKINGS
Riverlinks Box Office:
(03) 5832 9511 or
online at riverlinksvenues.com.au

TICKET PRICES
Adult \$25.00
Student/Concession \$20.00
(Ticket price includes Supper)

CARNIVAL DAY

OUTintheOPEN is Greater Shepparton's newest Festival celebrating community diversity.

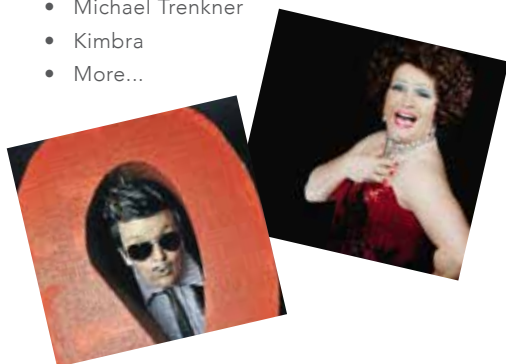
Carnival Day is our BIG event! Come and play with us in the park at **Queen's Gardens on Saturday 16 November from 10.30am - 4.30pm (cnr. Wyndham & Nixon Streets, Shepparton)**. Wander through the stalls and markets; savour the smells and tastes of fresh local produce. There's music, entertainment, food & info galore.

Bring your friends, family and loved ones and don't forget your picnic blanket! Also, please keep in mind as you plan for the day, that Carnival Day has a no glass policy.

Check out the Art Show while the kids bounce on the jumping castle! FREE family fun for everyone!!

Performers include:

- Dolly Diamond
- Barry Brightside
- Rhubarb Rouge
- Cameron Conobie
- Renee Rankin and Aaron Moor
- Dayna Tinline
- The Murks
- Grant Hicks
- 36 Degrees South
- Samoan Singers
- PAST PRESENT
- JAM (Jake Dix & Madeline Galbraith)
- Michael Trenkner
- Kimbra
- More...



Stalls to include:

- JOY 94.9 (roving reporter)
- Flashy Bits
- Sunglasses & Hats - Pat Casey
- PFLAG Shepparton/Goulburn Valley Pride Inc.
- Goulburn Valley Health/Papscreen Victoria
- UnitingCare Cutting Edge - Diversity Project
- & Diversity Group
- Cobaw Community Health - WayOut
- Gay and Lesbian Tourism Australia (GALTA)
- Uniting Network Australia
- Chef's Toolbox
- Mental Illness Fellowship
- Home at Last
- headspace Shepparton
- The Bridge Youth Service - Creativity Tent
- Victorian Labor - ALP
- Roger's Clutter 2nd Hand Books
- Earthly Adornments
- GV Health - Act Belong Commit
- Primary Care Connect - Gambling
- This N That For Crafts
- Victoria Police GLO unit
- OUTintheOPEN Info Tent/Art Show
- Berry Street
- Mini Musical Instruments
- St. John's Ambulance - First Aid
- Ladies clothing

Amusements/Food vendors to include:

- Dreamworks Jumping Castle - FREE
- Say Cheese Photobooth - FREE
- Shepparton Lions Club BBQ
- Flamin' Woodfired Pizza
- La Crepe Downunder (Gluten free crepes)
- Café Buzz Box (Coffee)
- Hot Dog Van

BOOK READING AT SHEPPARTON LIBRARY

Come and meet the favourite award-winning

HIPPOPOTAMUS

... and please bring cake!

There's a **HIPPOPOTAMUS** on Our Roof Eating Cake
By Hazel Edwards
Illustrated by Deborah Niland
ISBN 9780143501367

My **HIPPOPOTAMUS** is on Our Caravan Roof Getting Sunburnt
By Hazel Edwards
Illustrated by Deborah Niland
ISBN 9780143501381

Hey **HIPPOPOTAMUS** Do Elebras Eat Cake Too?
By Hazel Edwards
Illustrated by Deborah Niland
ISBN 9780143501398

Guess What? There's a **HIPPOPOTAMUS** on the Hospital Roof Eating Cake!
By Hazel Edwards
Illustrated by Deborah Niland
ISBN 9780143501374

Look, There's a **HIPPOPOTAMUS** in the Playground Eating Cake
By Hazel Edwards
Illustrated by Deborah Niland
ISBN 9780143501404

Saturday, 16 November
Shepparton Library
41 Marungi St,
Shepparton VIC 3630
(behind Council offices)
10.00am

Author:
Hazel Edwards
www.hazeledwards.com

All titles published by Penguin Group (Australia)
Contact Peg McColl, Rights Manager
peg.mccoll@au.penguin.com

Illustrator:
Deborah Niland
www.deborah-iland.com.au

MORE GREAT EVENTS!



\$5 entry

GLOW

youth dance party & social event

Wesley Hall, 136 Maude St, Shepparton
Saturday November 16th, 6.00pm to 10.00pm
Strictly alcohol, cigarette and drug free under 25s event

Lollies, chips & drinks for sale – bring some loose change.
Pizza will be provided for dinner – get in early!
There will be a dance floor and acoustic chill out space with bean bags.

This event will be fully supervised – security guards and first aid attendants will be on site. Free cloak room available.

For more info go to www.outintheopen.org.au

COMMUNITY BRUNCH AT FRIAR'S CAFE

Join us on Sunday morning
17 November at 11am.

Festival fans are invited to join us for the official OUTintheOPEN Festival Fundraising Brunch, taking place upstairs (mezzanine level) at Friar's Cafe & Wine Bar on Fryers Street, Shepparton.

Tickets \$20ea available @
www.trybooking.com/DSQV
Enjoy any breakfast
menu item and a tea
or coffee

OUR SUPPORTERS



headspace
Shepparton

129 High Street, Shepparton VIC 3630
Tel 03 5823 8800 Fax 03 5821 8678
headspace.org.au



headspace can help
with:
General health
Mental health and wellbeing
Alcohol & other drugs
Employment and education

Threadsville

Vintage / Retro / Bridal / Custom Made

13-15 Fraser Street, Shepparton / 5831 1957 / threadsville.com.au



Talisman
menswear
74 McIennan St. Mooroopna

58255170

like Talisman Menswear on facebook

VICTORIAN LABOR

proudly supports

OUT IN THE OPEN FESTIVAL.

Martin Foley MP • Member for Albert Park • Shadow Parliamentary Secretary for Equality

Candy Broad MP

Jaala Pulford MP

Kaye Darveniza MP

Member for Northern Victoria

Member for Western Victoria

Member for Northern Victoria

OUR SUPPORTERS

www.valleysport.net.au

Supporting Safe, Inclusive & Respectful
Sport & Active Recreation in the
Goulburn Valley.

Goulburn Valley Sports Assembly Inc. supports the following rural shires:



Valley Sport
Regional Coverage

- City of Greater Shepparton
- Rural City of Benalla
- Shire of Mansfield
- Shire of Mitchell
- Shire of Moira
- Shire of Murrindindi
- Shire of Strathbogie

 [twitter@valleysport](https://twitter.com/valleysport)

 facebook.com/valleysport

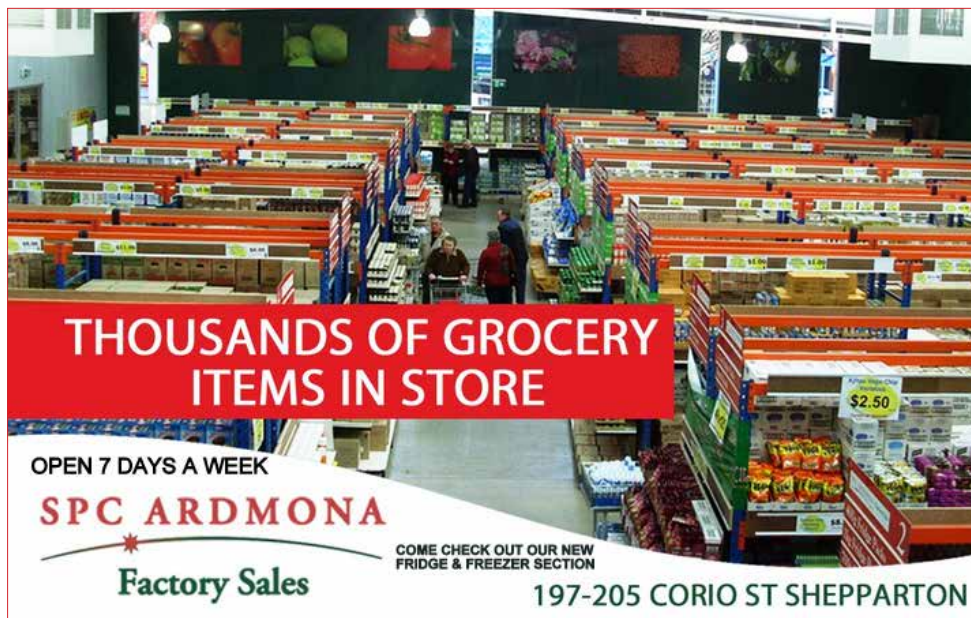
VALLEY SPORT
Goulburn Valley Sports Assembly Inc. 

PO Box 1361,
Shepparton VIC 3632

Shepparton Sports Stadium
120 Numurkah Road
Shepparton VIC 3630

Phone: 03 5831 8456
Fax: 03 5831 2597
www.valleysport.net.au

OUR SUPPORTERS



**THOUSANDS OF GROCERY
ITEMS IN STORE**

OPEN 7 DAYS A WEEK

SPC ARDMONA

Factory Sales

COME CHECK OUT OUR NEW
FRIDGE & FREEZER SECTION

197-205 CORIO ST SHEPPARTON



**Cill's
Creative Cakes**

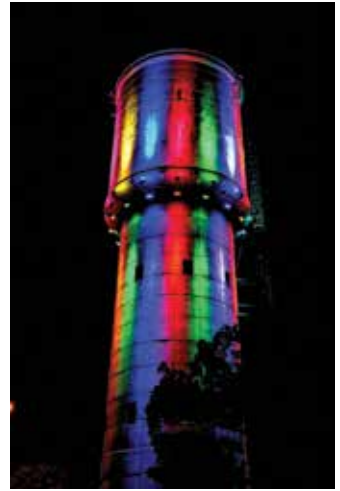
Custom Made Cakes For All Occasions
(03) 5822 1673
www.cillscreativecakes.com.au

VISIT THE RAINBOWS!

CHECK OUT THESE LOCAL ATTRACTIONS WHILE VISITING GREATER SHEPPARTON...



Check out Shepparton's Mooving Art: Monash Park, cnr. High & Fryers Sts (Photo: Liz Arcus)



Visit Mooroopna's colourful water tower: McLennan Street (Photo: Daniel Gommers)

Thank you to the following organisations/businesses for their sponsorship and support...



SUPPORT THE CAUSE!

Equal Love  **RALLY FOR**

MARRIAGE EQUALITY

**1.30pm Sunday
17 November**

Queens Gardens

Cnr Wyndham & Nixon Sts
Shepparton

Followed by

**MID-
SPRING
VOWS**



QUEENSLAND
UNIVERSITY OF WOMEN



Those wanting to partake in commitment ceremony **MUST** register
RSVP to damien@ucce.org.au or 0437 134 625